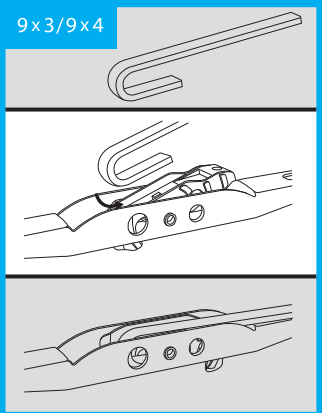


# CAM2

## Wiper Blade Installation Instructions

9x3/9x4



### MATERIALS NEEDED:

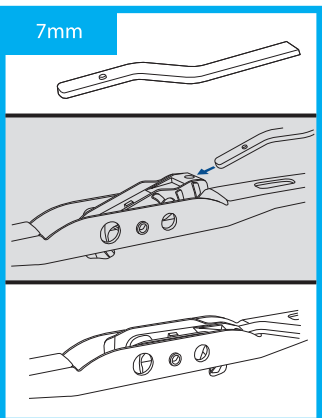
1. New windshield wiper blades
2. Soft cloth or paper towels (for cleaning)
3. Basic tools, if required (screwdriver, pliers, etc.)

### STEPS:

**Purchase the Right Wiper Blades:** Measure the length of your current wiper blades or check your vehicle's manual to determine the correct size for replacement wiper blades. Purchase blades that match the correct size and fit for your vehicle.

**Park Safely:** Make sure your vehicle is parked in a safe location, and turn off the ignition.

7mm



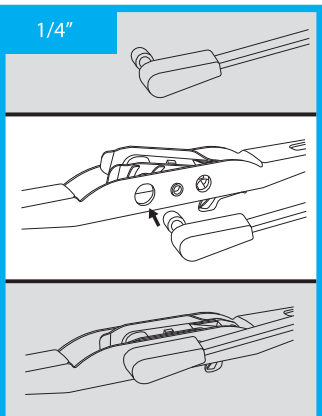
**Lift the Wiper Arm:** Gently lift the wiper arm away from the windshield until it locks in an upright position. This prevents the arm from accidentally snapping back against the windshield.

### Remove the Old Blade:

**Traditional Hook-Type Blades:** Locate the small tab or release lever on the underside of the wiper blade where it connects to the wiper arm. Press or lift this tab to release the blade from the arm. Slide the old blade out of the hook.

**Pinch Tab Blades:** If your wiper blades have a pinch tab design, locate the tab on the wiper arm where it connects to the blade. Pinch the tab to release the blade and slide it off the arm.

1/4"



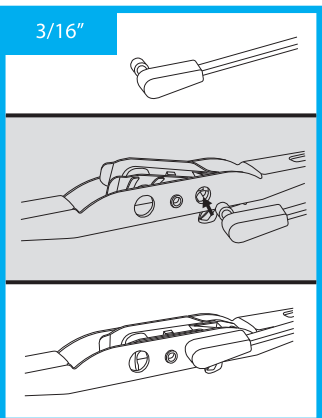
**Clean the Wiper Arm:** Use a soft cloth or paper towel to wipe down the wiper arm and the area around the wiper attachment point. This helps remove dirt and debris that might affect the performance of the new wiper blade.

### Attach the New Blade:

**Traditional Hook-Type Blades:** Align the new wiper blade with the wiper arm hook. Slide the wiper blade into the hook until you hear or feel it click into place.

**Pinch Tab Blades:** Align the new wiper blade's pinch tab with the attachment point on the wiper arm. Push the blade onto the arm until you hear a click, indicating that it's securely attached.

3/16"



**Lower the Wiper Arm:** Carefully lower the wiper arm back onto the windshield. Make sure the new wiper blade is not in contact with the windshield at this point.

**Repeat for the Other Wiper:** If you're replacing both wiper blades, repeat the above steps for the other wiper.

**Test the Wipers:** Turn on your vehicle's wiper system and test the new blades to ensure they're working properly and clearing the windshield effectively.

[www.CAM2.com](http://www.CAM2.com)

Remember that specific instructions may vary based on your vehicle's make and model, so consult your vehicle's manual if you encounter any difficulties or unique features. Properly functioning wiper blades are crucial for maintaining good visibility in various weather conditions, so replace them whenever you notice reduced performance or visible wear.